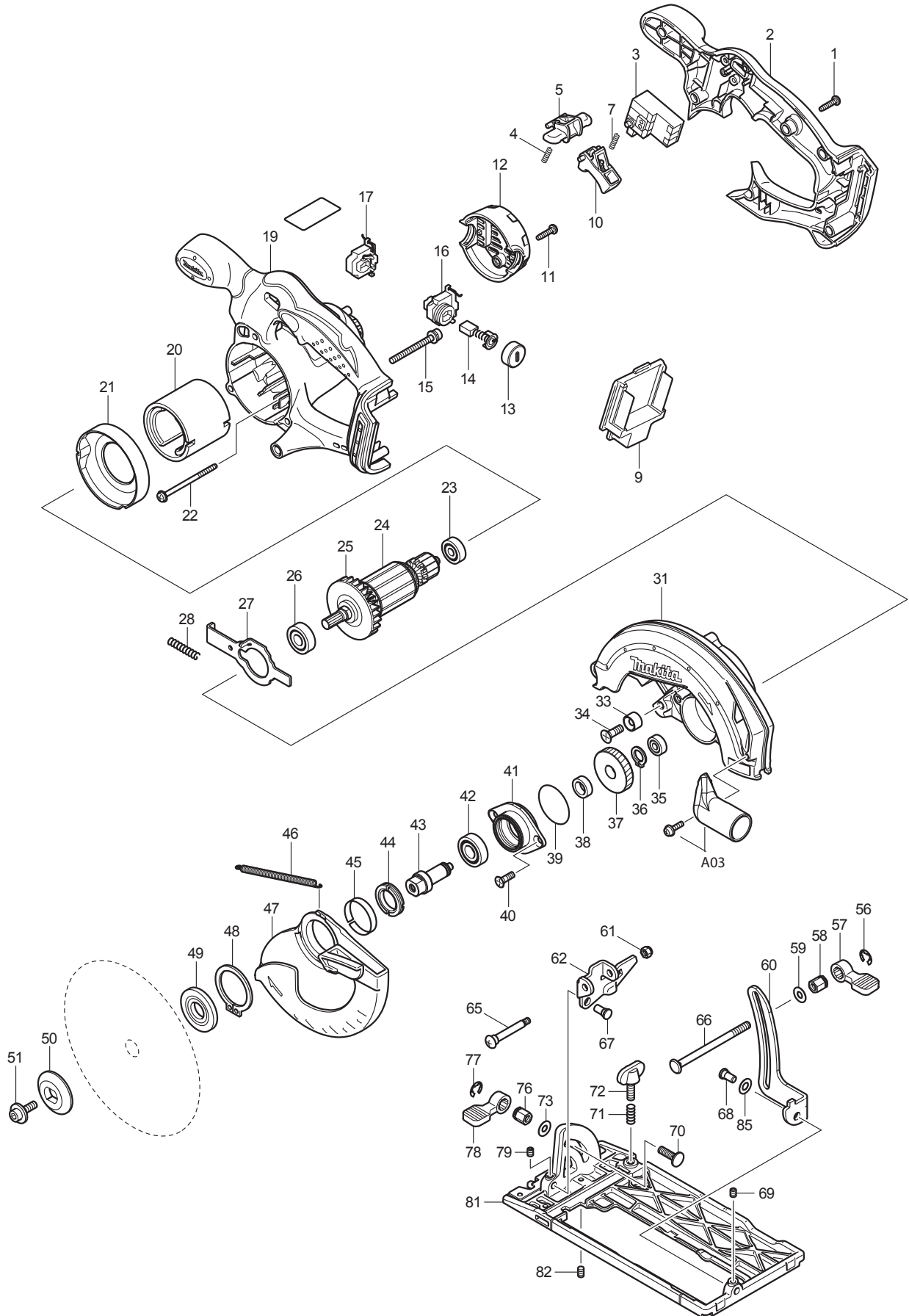




09 - 2011  
BSS611 / BSS611X / BSS611Z / BSS611F  
18V 6-1/2" CIRCULAR SAW



| Item No | Type | Ref  | Part No  | Description                                      | Qty | Unit |
|---------|------|------|----------|--|-----|------|
| 1       |      |      | 265995-6 | TAPPING SCREW 4X18                               | 5   | PC.  |
| 2       | 1    |      | 450227-6 | * HANDLE COVER                                   | 1   | PC.  |
|         | 2    |      | 141472-1 | * HANDLE COVER                                   | 1   | PC.  |
| 3       |      |      | 651976-0 | SWITCH TG73BD                                    | 1   | PC.  |
| 4       |      |      | 231469-9 | COMPRESSION SPRING 4                             | 1   | PC.  |
| 5       |      |      | 419664-3 | LOCK OFF LEVER                                   | 1   | PC.  |
| 7       |      |      | 231469-9 | COMPRESSION SPRING 4                             | 1   | PC.  |
| 9       | 1    |      | 643812-4 | * TERMINAL, BLACK                                | 1   | PC.  |
|         | 2    |      | 643838-6 | * TERMINAL                                       | 1   | PC.  |
|         | 3    |      | 643859-8 | * TERMINAL                                       | 1   | PC.  |
| 10      |      |      | 419665-1 | SWITCH LEVER                                     | 1   | PC.  |
| 11      |      |      | 265995-6 | TAPPING SCREW 4X18                               | 2   | PC.  |
| 12      |      |      | 419281-9 | REAR COVER                                       | 1   | PC.  |
| 13      |      |      | 643829-7 | BRUSH HOLDER CAP                                 | 2   | PC.  |
| 14      | 1    |      | 194435-6 | CARBON BRUSH CB-441 2PC/SET (W/O ORIGIN) - N/L/A | 1   | SET  |
|         | 2    |      | 195022-4 | CARBON BRUSH CB-441, 2PCS/SET, W/ORIGIN          | 1   | SET  |
| 15      |      |      | 911263-2 | PAN HEAD SCREW M5X40                             | 3   | PC.  |
| 16      | 1    |      | 643825-5 | * BRUSH HOLDER                                   | 1   | PC.  |
|         | 2    |      | 643897-0 | * BRUSH HOLDER                                   | 1   | PC.  |
| 17      | 1    |      | 643824-7 | * BRUSH HOLDER                                   | 1   | PC.  |
|         | 2    |      | 643898-8 | * BRUSH HOLDER                                   | 1   | PC.  |
| 19      | 1    |      | 158604-3 | * MOTOR HOUSING COM                              | 1   | PC.  |
|         | 2    |      | 141528-0 | * MOTOR HOUSING COM                              | 1   | PC.  |
| 20      |      |      | 638571-3 | YOKE UNIT  | 1   | PC.  |
| 21      |      |      | 419285-1 | BAFFLE PLATE                                     | 1   | PC.  |
| 22      |      |      | 266292-3 | TAPPING SCREW 4X65                               | 2   | PC.  |
| 23      |      |      | 210045-2 | BALL BEARING 627DDW                              | 1   | PC.  |
| 24      |      |      | 510095-0 | ARMATURE ASSY (INCLUDES ITEMS 23, 25 & 26)       | 1   | PC.  |
| 25      |      |      | 241869-5 | FAN 55   | 1   | PC.  |
| 26      |      |      | 211061-7 | BALL BEARING 6000LLB                             | 1   | PC.  |
| 27      | 1    |      | 345659-9 | SHAFT LOCK 102MM                                 | 1   | PC.  |
|         | 2    |      | 346059-6 | SHAFT LOCK 104MM                                 | 1   | PC.  |
| 28      |      |      | 233092-6 | COMPRESSION SPRING 5                             | 1   | PC.  |
| 31      |      |      | 158617-4 | BLADE CASE COM. (TYPE1 W/LABEL, TYPE2 W/O LABEL) | 1   | PC.  |
|         |      | INC. | 213434-0 | O-RING 26  | 1   | PC.  |
|         |      | INC. | 816847-0 | OPERATIONAL INDICATION LABEL (TYPE1 ONLY)        | 1   | PC.  |
| 33      |      |      | 262049-0 | RUBBER RING 6                                    | 1   | PC.  |
| 34      |      |      | 251368-9 | + COUNTERSUNK SCREW M6                           | 1   | PC.  |
| 35      |      |      | 210028-2 | BALL BEARING 606ZZ                               | 1   | PC.  |
| 36      |      |      | 961052-5 | RETAINING RING S-12                              | 1   | PC.  |
| 37      |      |      | 227156-6 | SPUR GEAR 52                                     | 1   | PC.  |
| 38      |      |      | 257173-2 | RING 12  | 1   | PC.  |
| 39      |      |      | 213512-6 | O RING 39  | 1   | PC.  |
| 40      |      |      | 265034-2 | + COUNTERSUNK HEAD SCREW M5X16                   | 2   | PC.  |
| 41      |      |      | 318009-1 | BEARING BOX                                      | 1   | PC.  |
| 42      |      |      | 210109-2 | BALL BEARING 6001DDW                             | 1   | PC.  |
| 43      |      |      | 324626-7 | SPINDLE  | 1   | PC.  |
| 44      |      |      | 285845-9 | BEARING RETAINER 19-29                           | 1   | PC.  |
| 45      |      |      | 345469-4 | THICKNESS RING                                   | 1   | PC.  |
| 46      |      |      | 231821-1 | TENSION SPRING 3                                 | 1   | PC.  |
| 47      |      |      | 419280-1 | SAFETY COVER                                     | 1   | PC.  |
| 48      |      |      | 961152-1 | RETAINING RING (EXT) S-34                        | 1   | PC.  |
| 49      |      |      | 224411-7 | INNER FLANGE 35                                  | 1   | PC.  |
| 50      |      |      | 224409-4 | OUTER FLANGE 35                                  | 1   | PC.  |
| 51      |      |      | 266133-3 | HEX. SOCKET HEAD BOLT M6X20                      | 1   | PC.  |
| 56      |      |      | 961014-3 | STOP RING E-8                                    | 1   | PC.  |
| 57      |      |      | 272229-0 | LEVER 40   | 1   | PC.  |

| Item No | Type | Ref | Part No  | Description                 | Qty | Unit |
|---------|------|-----|----------|-----------------------------|-----|------|
| 58      |      |     | 252158-3 | HEX.NUT M6                  | 1   | PC.  |
| 59      |      |     | 941151-9 | FLAT WASHER 6               | 1   | PC.  |
| 60      |      |     | 345658-1 | DEPTH GUIDE                 | 1   | PC.  |
| 61      |      |     | 252103-8 | HEX. LOCK NUT M5-8          | 1   | PC.  |
| 62      |      |     | 345657-3 | ANGULAR GUIDE               | 1   | PC.  |
| 65      |      |     | 265056-2 | + PAN HEAD SCREW M5         | 1   | PC.  |
| 66      |      |     | 266194-3 | FLAT HEAD SCREW M6X90       | 1   | PC.  |
| 67      |      |     | 256480-0 | SHOULDER PIN 6-7            | 1   | PC.  |
| 68      |      |     | 256480-0 | SHOULDER PIN 6-7            | 1   | PC.  |
| 69      |      |     | 266264-8 | HEX. SOCKET HEAD SCREW M5X6 | 1   | PC.  |
| 70      |      |     | 251919-8 | CAP SQUARE NECK BOLT M6X20  | 1   | PC.  |
| 71      |      |     | 231007-7 | COMPRESSION SPRING 6        | 1   | PC.  |
| 72      |      |     | 251896-4 | SCREW M5X20                 | 1   | PC.  |
| 73      |      |     | 941151-9 | FLAT WASHER 6               | 1   | PC.  |
| 76      |      |     | 252133-9 | HEX. NUT M6                 | 1   | PC.  |
| 77      |      |     | 961014-3 | STOP RING E-8               | 1   | PC.  |
| 78      |      |     | 272251-7 | LEVER 30                    | 1   | PC.  |
| 79      |      |     | 266264-8 | HEX. SOCKET HEAD SCREW M5X6 | 1   | PC.  |
| 81      |      |     | 154831-0 | BASE COMPLETE               | 1   | PC.  |
| 82      |      |     | 266229-0 | HEX. SOCKET SET SCREW M5X8  | 1   | PC.  |
| 85      |      |     | 253186-1 | FLAT WASHER 7               | 1   | PC.  |
| E01     |      |     | 620086-4 | * CONTROLLER (Added)        | 1   | PC.  |

#### **ACCESSORIES**

- See catalogue or visit [www.makita.ca](http://www.makita.ca) for more accessories information -

|     |     |      |           |  |   |     |
|-----|-----|------|-----------|--|---|-----|
| A01 |     |      | 164095-8  | GUIDE RULE                               | 1 | PC. |
| A02 |     |      | 783203-8  | HEX. WRENCH 5                            | 1 | PC. |
| A03 |     |      | P-80012   | DUST NOZZLE                              | 1 | PC. |
| A04 |     |      | A-85092   | 6-1/2" C.T.SAW BLADE 24T                 | 1 | PC. |
|     |     |      | T-01395   | 6-1/2" C.T.SAW BLADE 16T                 | 1 | PC. |
|     |     |      | T-01404   | 6-1/2" C.T.SAW BLADE 24T                 | 1 | PC. |
|     |     |      | T-01410   | 6-1/2" C.T.SAW BLADE 40T                 | 1 | PC. |
|     |     |      | T-01426   | 6-1/2" C.T.SAW BLADE 16T/24T 2PC/SET     | 1 | SET |
| A05 | 1   |      | DC18RA    | CHARGER DC18RA                           | 1 | PC. |
|     | 2   |      | DC18RC    | CHARGER DC18RC                           | 1 | PC. |
|     |     |      | DC18SD    | CHARGER DC18SD                           | 1 | PC. |
|     |     |      | DC18SE    | AUTOMOTIVE CHARGER DC18SE                | 1 | PC. |
|     |     |      | DC18RAKIT | CHARGER + BATTERY (DC18RA+BL1830)        | 1 | SET |
|     |     |      | DC24SC    | CHARGER F/ 7.2-24V, 1.3-3.3AH BATTERY    | 1 | PC. |
| A06 |     |      | 194205-3  | 18V LI-ION BATTERY BL1830                | 1 | PC. |
|     |     |      | 194230-4  | 18V LI-ION BATTERY BL1830(3.0AH), 2/PK   | 1 | SET |
|     |     |      | 194288-3  | 18V LI-ION BATTERY BL1830 (3.0AH), 10/PK | 1 | SET |
| A07 | 1   |      | 824757-7  | PLASTIC CARRYING CASE                    | 1 | PC. |
|     |     | INC. | 163455-1  | LATCH                                    | 2 | PC. |
|     |     | INC. | 419360-3  | HANDLE                                   | 1 | PC. |
|     | 2   |      | 141353-9  | PLASTIC CARRYING CASE COMPLETE           | 1 | PC. |
|     |     | INC. | 163455-1  | LATCH                                    | 2 | PC. |
|     |     | INC. | 419360-3  | HANDLE                                   | 1 | PC. |
|     | Opt |      | 821010-X  | TOOL BAG 14"                             | 1 | PC. |
| A08 |     |      | 194649-7  | BATTERY PROTECTOR (F/BL1430, BL1830)     | 1 | PC. |
| A09 |     |      | 450128-8  | BATTERY COVER (F/LI-ION)                 | 1 | PC. |

**SERVICE CHANGES**

**1. Changes on Switch, Terminal and Housing Set (Battery Protection Circuit)**

(T/I#84907)

(T/I# 93260)

| Item No. | Description            | Type 1   | Type 2   | Type 3   |
|----------|------------------------|----------|----------|----------|
| 17       | Brush Holder           |          | 643824-7 | 643898-8 |
| 16       | Brush Holder           |          | 643825-5 | 643897-0 |
| 9        | Terminal               | 643812-4 | 643838-6 | 643859-8 |
| 2        | Handle Cover           |          | 450227-6 | 141472-1 |
| 19       | Motor Housing Complete |          | 158604-3 | 141528-0 |
| E01      | Controller             | ---      | ---      | 620086-4 |

Above parts are completely interchangeable as a set.

**Service Note:**

- Use TYPE 3 for repair of the models manufactured on or after December 2011 with using Yellow lead wire between Controller and Terminal.
- Use TYPE 2 (or TYPE 1) for repair of the models manufactured before December 2011 without using Yellow lead wire between Controller and Terminal.

**\*\* See Technical Information #93260 for Wiring Diagram Change**